



Your One-Stop Shop for Pumps, Parts, Rental and Repair...

PUMPS

- Centrifugal
- Gear
- Submersible
- Air-operated Diaphragm
- Self-priming
- Split-case
- Engine-Driven
- Skids / Units
- Rotary Lobe
- Metering / Dosing

MECHANICAL SEALS

- Single/Double Cartridge
- Component/Spring
- Metal Bellows
- Mixer/Agitator
- Seal Pots & Systems

MOTORS & DRIVES

- Explosion-proof
- IEEE841 Petro-Chem
- Control Panels
- Soft-starters
- VFD's
- Gearboxes/Gearmotors

PERIPHERALS

- ALL Coupling Types
- Coupling Guards
- Bearing Isolators
- Shims
- Baseplates / Skids
- Riser Blocks
- Spiral-wound Gaskets
- Hose Assemblies



Redefined the Standard of Performance Air-operated Double Diaphragm Pumps.



ANSI, Process, and Self-priming Pumps; After-market Parts for Popular Manufacturers.



Specialists in the Design and Manufacture of Mechanical Seals and Support Systems.



Designer and Manufacturer of Mechanical Power Transmission Products.



Diverse Manufacturer of Pumps and Solutions for Water, Wastewater and Industrial Applications.



The Global Solution for Electric Motors and Automation for Industry.



Large Variety of Submersible, Waste Water and Stainless Steel Corrosive Resistant Pumps.



Gearmotors, Reducers and Drives for All Industrial Applications.



Leader in Vertical Sump Pumps for All Wastewater Applications.



Gear and Centrifugal Pump Specifically Design for Chemical Industry



World Leader in Helical Gear Pump Manufacturing.



Chemical and Dosing Pump Specialists.



Heavy-duty Positive Displacement Industrial Pumps.



Hydraulic and Electric Diaphragm Metering Pumps for Every Industry.



Commercial and Industrial Pump Manufacturer of Regenerative Turbine Pumps.



Leading Manufacturer of High-Performing Centrifugal Pumps.



Complete Line of Rotary Lobe Pumps and In-line Grinders.



Global Leader in High-Performance Fluid Sealing Products.



Since 1965 Sandpiper Has Held A Leading Position In The AOD Pump Market.

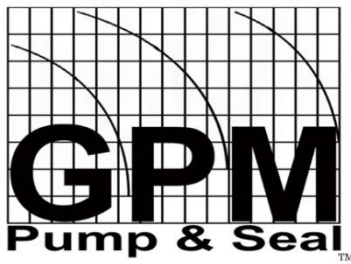


Leading World-wide Specialist In The Progressive Cavity Pump Industry.

406 Anders Lane
Kemah, TX 77565

Ph: 281-764-1311
Fx: 281-764-1330

www.gmpumpandseal.com

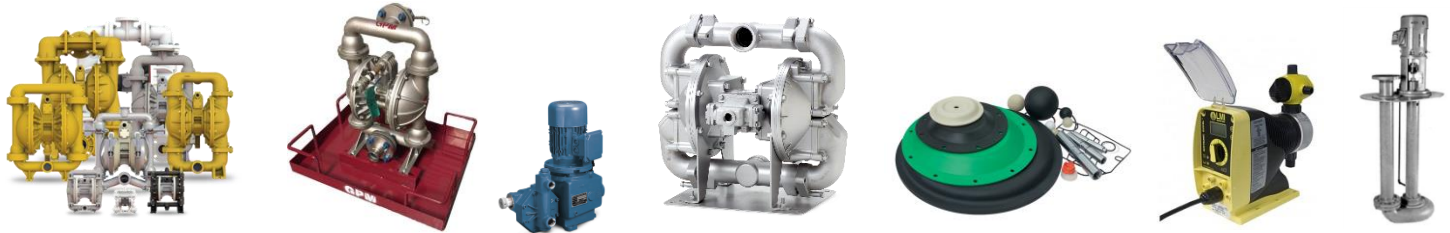


406 Anders Lane
Kemah, TX 77565

Ph: 281-764-1311
Fx: 281-764-1330

www.gmpumpandseal.com

Your One-Stop Shop for Pumps, Parts, Rental and Repair...



$$\frac{GPM_1}{GPM_2} = \frac{RPM_1}{RPM_2} \rightarrow GPM_2 = GPM_1 \left(\frac{RPM_2}{RPM_1} \right)$$

$$\frac{TDH_1}{TDH_2} = \left(\frac{RPM_1}{RPM_2} \right)^2 \rightarrow TDH_2 = TDH_1 \left(\frac{RPM_2}{RPM_1} \right)^2$$

$$\frac{BHP_1}{BHP_2} = \left(\frac{RPM_1}{RPM_2} \right)^3 \rightarrow BHP_2 = BHP_1 \left(\frac{RPM_2}{RPM_1} \right)^3$$

HEAD & PRESSURE FORMULA

$$\text{Head in feet} = \frac{(\text{Head in psi}) \times 2.31}{(\text{Sp. Gr.})}$$

$$\text{Head in psi} = \frac{(\text{Head in feet}) \times (\text{Sp. Gr.})}{2.31}$$

$$^{\circ}\text{F} = ^{\circ}\text{C} \left(\frac{5}{9} \right) + 32$$

$$^{\circ}\text{C} = \left(^{\circ}\text{F} - 32 \right) \cdot \frac{5}{9}$$

PUMPING POWER FORMULA

Centrifugal pumps:

$$\text{Brake hp} = \frac{\text{gpm} \times H_k \times \text{Sp. Gr.}}{3960 \times \text{Efficiency}}$$

Rotary and reciprocating pumps:

$$\text{Brake hp} = \frac{\text{gpm} \times \text{psi}}{1714 \times \text{Efficiency}}$$

$$\text{KW} = \frac{\text{pump bhp} \times 0.7457}{\text{motor efficiency}}$$